



CAN

COMMUNITY
ARCHITECTS
NETWORK

NEWSLETTER

October 2014



Network
CAN core
meeting
in Yogyakarta **p4**

Myanmar
City-wide
upgrading
workshop
in Mandalay **p5**

Nepal
Heritage
mapping
for Old
Towns **p7**

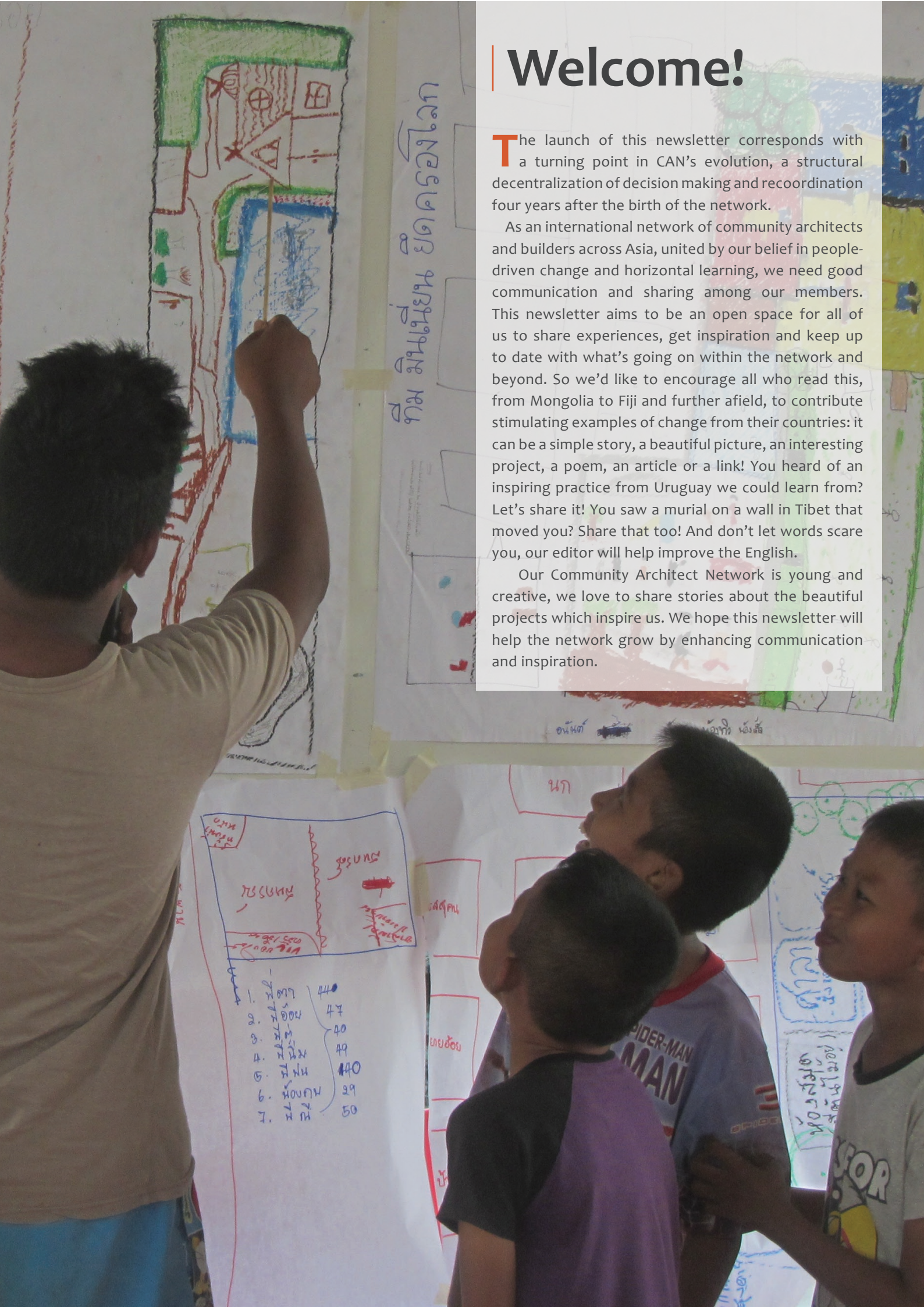
**Perween
Rahman**
fellowship
results **p12**

Welcome!

The launch of this newsletter corresponds with a turning point in CAN's evolution, a structural decentralization of decision making and recoordination four years after the birth of the network.

As an international network of community architects and builders across Asia, united by our belief in people-driven change and horizontal learning, we need good communication and sharing among our members. This newsletter aims to be an open space for all of us to share experiences, get inspiration and keep up to date with what's going on within the network and beyond. So we'd like to encourage all who read this, from Mongolia to Fiji and further afield, to contribute stimulating examples of change from their countries: it can be a simple story, a beautiful picture, an interesting project, a poem, an article or a link! You heard of an inspiring practice from Uruguay we could learn from? Let's share it! You saw a mural on a wall in Tibet that moved you? Share that too! And don't let words scare you, our editor will help improve the English.

Our Community Architect Network is young and creative, we love to share stories about the beautiful projects which inspire us. We hope this newsletter will help the network grow by enhancing communication and inspiration.



Calling the circle:
CAN 2nd “core” meeting p4

Perween Rahman
fellowship results p12

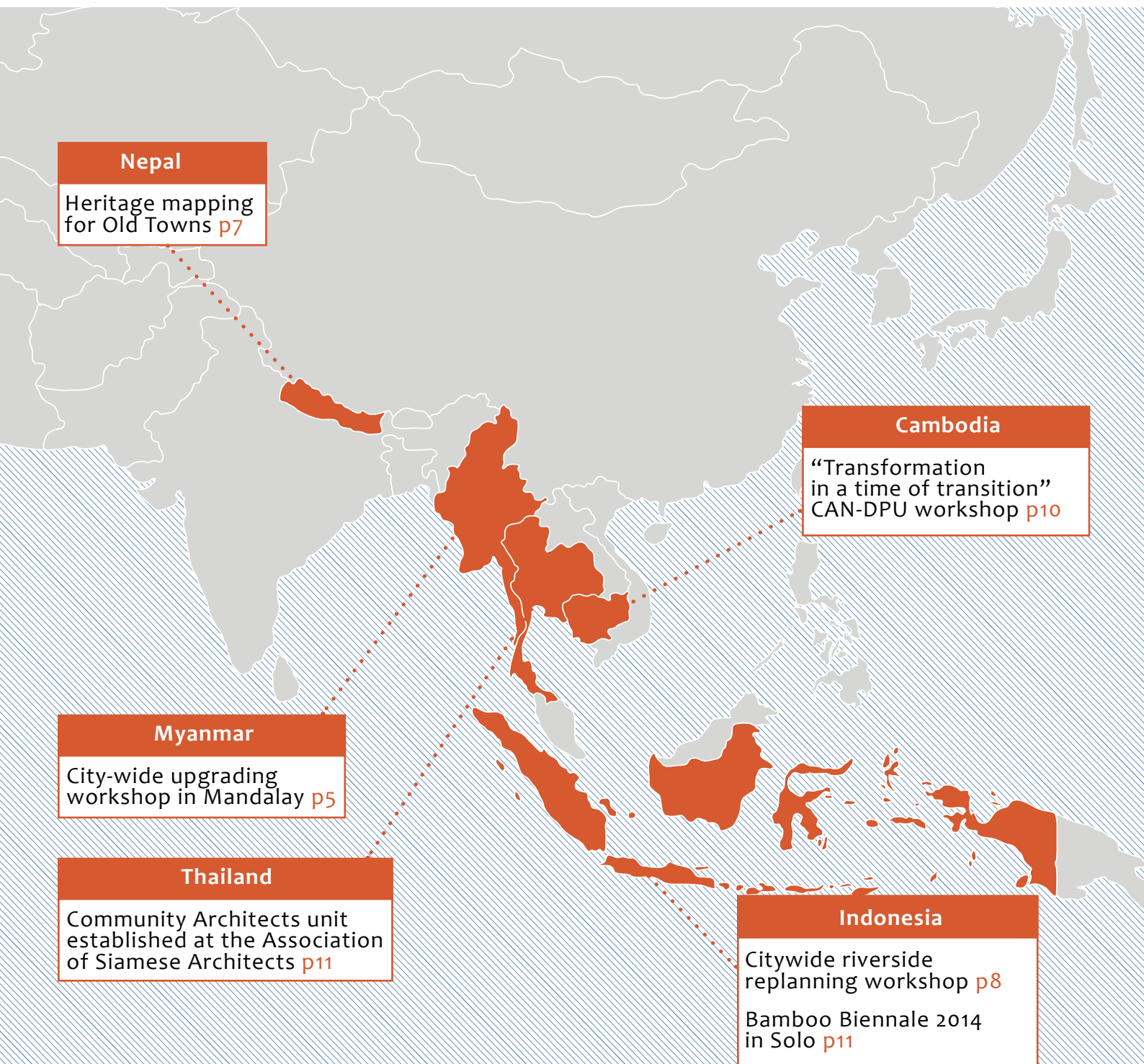
Briefs:
Media / Events / Opportunities p14

For contributions, comments, or queries,
write at communityarchitects.news@gmail.com

For more information about the network, visit the
website: communityarchitectsnetwork.info/

Thanks to all those who contributed their stories,
pictures and experiences for this issue!

WHAT'S GOING ON AROUND ASIA:





Calling the circle: CAN core team gathering in Yogyakarta

CAN held a ‘core’ team meeting in Yogyakarta, Indonesia in July with the theme ‘Transformation’. Representatives from each country shared their current work, and together discussed the restructuring of new funding by Misereor and new coordination of CAN in Southeast Asia.

Nad, Tee and Maurice attended from Thailand, Nylen from Cambodia, May from the Philippines, Lumanti from Nepal, and from the host country Indonesia Cakcak, Yuli, Mayang, Ivana, and Ariel. The workshop opened with participants sitting in a circle around a collection of meaningful objects, sharing stories and dreaming together about our aspirations for the future. Over the course of the workshop these hopes and aspirations guided CAN’s reorientation and management.

The Impacts and Indicators for Misereor funding require: CAN working in 6 cities in 6 countries per year, and three cities plus one country to advocate for pro-poor policy, engagement with 50 YP, 7 universities and 3-4 technical institutes, 10 communities must get support via workshops and/or training, and six books should be produced over 2 years. Such processes are already in motion across the CAN network, so the template helped structure the evolution of CAN towards increased sub-regional and sub-themed management.

It was acknowledged that in order to decentralise CAN coordination and decision making in a sustainable way, it is critical to catch “real” demands and interests happening on the ground and open new spaces of communication at a sub-regional level for learning, working, supporting and inspiring each other as neighbouring countries. While sharing our personal and country-related goals and aspirations, we discovered sub-themes and patterns, and experimented with possible scenarios of sub-regional coordination.

Workshops are becoming regarded as an important pillar of the CAN network, functioning both as a singular event

to push projects forward as well as a longer term process of trial and error in developing coordination and collaboration.

The timing felt particularly uncanny for many who attended, in parallel to planning together a restructuring of CAN, we also shared about personal matters of the heart, “stepping back” and the need for balance was a recurring theme. Such sentiments were expressed with positive self-reflection on the need to sustain yourself.

Many of the group had attended the first CAN core meeting in 2010, in which the management of Rockefeller funding was planned together. The first generation, or “oldies” as Maurice often referred to himself, reflected on how different the second generation, or “young professionals” are. Working more often with artists, artisans, new technologies and the youth, collaborating with universities and alternative architecture practices, the movements of the network today is able to find grip in more diverse places – as can be seen in the diversity of applications for the Perween Rahman fellowship. The meeting concluded with a feeling of optimism in how CAN was evolving, scaling out not just numbers of communities involved, but diversifying our areas of engagement, and despite growing in diversity continuing to be united by our enthusiasm and belief in people-driven change.

Scaling out the network is not just about getting more communities involved, but diversifying our areas of engagement

For more information, write to **Tee** at architect_once@hotmail.com



Myanmar Community upgrading workshop in Mandalay

The four communities of Thayagong, Seeyosoo, Nadi Pancha Park and Tondon in Mandalay, Myanmar's second largest urban area, were part of a 10-day surveying and mapping workshop in May to kickstart participatory design in their settlements and start using their ACCA budget. The local network of **Women for the World** (WFW) in Mandalay jointly facilitated the workshop with an **ACHR** team (Chawanad Luansang, Thanawin Wijitporn, and Khanittha Sakduang), hosted by Tondon community. The longer term goal is to develop a viable land readjustment scheme in partnership with the government, as an alternative to relocation for the lower-income settlements in Mandalay.

The workshop provided training in survey and mapping techniques for the communities, so they could visualise the necessary information needed to develop an upgrading design for the settlements, such as the number of families, type of land ownership and size of each community, income and ability to save for each family and community, as well as the future development plans in each area.

Thayagong community lives on canal land, Seeyosoo community lives on monastery land, and Nadi Pancha Park and Tondon communities are located on local government land. Different land ownerships is common for settlements in Myanmar, and from the beginning of the workshop it was realised that a flexible land readjustment scheme was needed, which could apply to different types of land ownership, while at the same time respond to specificities of local future development.

During the mapping Tondon community discovered that it is possible to readjust 30 houses to fit into the local government's land, and Seyosoo community found out that if they readjusted their plot they could still accommodate 130 houses, and return the land around the temple back to the Monastery. This was a great boost of confidence for the communities, as they were able to prove to the government that another solution to relocation is indeed possible. As the ACCA budget is only enough to upgrade small clusters of 20-30 houses in 3 communities, it is critical that the upgrading becomes regarded as a flexible model to be replicated in other settlements by the government, regardless of the type of land ownership.

By readjusting plots Tondon discovered it's possible to fit 30 houses into local government's land, and Seyosoo found out they can accommodate 130 houses, and return some land back to the Monastery.



Tondon community hosted the other communities during the training, and their site was used as a working example of how to map and survey a settlement for land readjustment. It was important that the mapping and surveying process could be carried out by the communities themselves. The homework for Tondon community following the workshop was to help the other communities finish their mapping and surveying.

The next step for the communities was how to manage scarce ACCA funds in Mandalay's Community Development Fund, and also to start working with student architects and linking with more communities to start mapping and surveying at city-wide level.

For further information, contact
Nad at chawanad@hotmail.com



*“Dream of our community”
ideas for onsite-upgrading
in Mandalay using skills of
local carpenters. Thanks
to Thanawin Wijitporn
for this image and help in
developing these projects.*

Nepal

Heritage mapping for old towns in Thecho and Thankot



Many small towns in the Kathmandu Valley are heritage sites, but with little effort made to preserve cultural heritage, rapid urbanization is taking its toll on the culture heritage of these sites and traditional buildings are quickly falling into conditions of dilapidation.

LUMANTI Support Group for Shelter has helped communities and the saving cooperatives in the towns of Thecho and Thankot to link with architects from **PTAG** (a network of technical professionals working to assist poor communities) to help upgrading settlements under ACCA funding. Mapping has proved to be an incredibly important step to engage the community in developing a passion to upgrade their housing and preserve their cultural heritage for the city.

And it all started from sharing across borders... In 2011 the communities of Thecho and Thankot in Nepal attended a workshop in Penang, Malaysia to share their ACCA funded city-scale mapping and upgrading with other countries. During the workshop the community leaders were inspired by the heritage mapping from Kotagede in Yogyakarta, and returned to Nepal with the desire to do the same in their cities. Young architects from the Institute of Engineering volunteered to support the communities in their heritage mapping. The architect team prepared a base map and the savings group coordinators in each of the settlements helped to link the team with their communities to identify key information in their area. The team developed various maps, following 7 themes which helped define the characteristics of Thecho and Thankot (material and age



By mapping, the communities developed a passion to upgrade their housing and preserve their cultural heritage for the city.

of buildings, infrastructure facilities, special ornaments, culturally important heritage buildings such as temples and shrines, traditional houses and water infrastructure, and cultural festivals and chariot ways).

The maps helped the savings cooperatives get information about their members and understand the housing conditions within the city context. But furthermore the communities were able to pride themselves in preserving particular culture and heritage to their towns. One of the community leaders stated that if this mapping had been completed 5 years ago, they would have been able to save many of the traditional buildings of cultural values which are now either demolished or have been “modernized”. The Village Development Committees (VDCs) and the government authorities are now committed to support the cooperative in their drive to save the cultural heritage of their settlements.

For further information, contact

LUMANTI at shelter@lumanti.org.np



Indonesia

Citywide riverside replanning workshop in Yogyakarta

Indonesia held their first national workshop to develop an alternative design and upgrading of the Winongo and Gajahwong rivers in Yogyakarta, in Java. The workshop comprised of two phases: participatory mapping of 23 riverside communities from December 2013 to February 2014, followed by a design and planning “problem-solving” workshop for six settlements in May.

With the majority of riverbank land belonging to the Sultan of Yogyakarta, the objective was to integrate a program for settlement upgrading and improvement into city policy, integrating not only physical development plans, but social and environmental agendas as well. The communities presented their ideas to the government as a community-based alternative to the Yogya’s 2030 city-planning agenda to redevelop the river as a tourism object and new icon of the city, while celebrating *Gotong Royong*, the Javanese cultural belief that solving problems should best be done together.

Arkompjogja and **Paguyuban Kalijawi** facilitated the workshop, supported by architecture students and young professional from various cities across the country, as well

as local NGO’s. Paguyuban Kalijawi is a savings group network of housewives on Gajahwong and Winongo riverbank, who have been organizing and saving together for two years. During the workshop they co-ordinated the communities while Arkompjogja offered technical and social assistance. Arkompjogja helped to build a relationship of trust and confidence between communities and the city government, and leverage Paguyuban Kalijawi to become an important actor in policy at city level, as a viable, self-sufficient source of knowledge and resources.

The alternative river planning would focus on upgrading strategies to improve sanitation, infrastructure and environmental vulnerability. 6 kampungs were selected after the mapping for re-planning and upgrading based on major issues of risk exposure, land security, physical and environmental issues as well as social problems. The alternative re-development of the city would see a river design that recognises and enhances the cultural and economic value of using local materials, skills and traditional technologies, while putting the community as a main actor in development, planning, implementation and also maintenance of the river.

University architects involved in the mapping and design

The workshop presented a community-based alternative to Yogya’s 2030 city plan, while celebrating *Gotong Royong*, the Javanese cultural belief that solving problems should best be done together



process reported learning about settlement and city-planning dynamics, and that architecture was not only a physical reality but a social practice, and stated they were keen to be involved again. The Indonesian team was lucky to have friends from CAN Philippines, who are now expert at community working towards a city scale. They gave useful advice and shared many experiences in how to engage with communities and deal with the government throughout the workshop. The mayor expressed openness from the beginning to accommodating proposals made by the community in future policy, and delegated the department of Development and Planning to implement results from the workshop.

A **video** of the workshop is available.
For further information, contact
Arkompog at jogja@arkompog.or.id



△ Schematic designs focusing on bringing attention and life to public spaces; the design schematics aimed to enhance local socio-cultural, and economic values in combination with environmental and infrastructural upgrading.

▷ The first Community Development Fund in Indonesia was officially launched. Mrs. Ruby Haddad, UPCA Coordinator of the Philippines inaugurated the coming together of 18 womens savings groups in Yogya, which have been running for over 2 years.





Cambodia

Transformation in a time of transition: CDF-DPU workshop

Students from the **Development Planning Unit** (University College London) came to Cambodia in May for a fieldwork workshop carried out in collaboration with Cambodia's **Community Development Foundation** and CAN-CAM (Community Architects Network of Cambodia).

In the first part of the workshop, students learnt about the reality of development process in the country, and specifically about community-driven approach by CDF, through field visits in different communities and lectures from experts from universities, NGOs, UN-Habitat and the government. Then they worked on the ground with CAN-CAM, their networked communities and students from Cambodian universities in upgrading solutions. The task for the students, who were divided in 6 different sites in Phnom Penh, Battambang and Banteay Meanchey provinces, was to analyse the transformation potential and capacity of communities and the network within their provincial socio-political context, and present back development strategies to the CDF, local governments

and communities. Working together with the communities the groups devised development proposals focusing on strategic collaborations and site interventions to improve settlements living conditions, within context of existing community and government structures and processes. All the activities helped CDF to strengthen its partnerships with local authorities and re-connect with the people in the region.

The workshop included a meeting with H.E. Governor of Phnom Penh to discuss issues within city development agenda, presentations to local authorities in the districts and municipalities involved and a final presentation at Phnom Penh municipality office.

A new topic explored was the role of “human-centered design” and its contribution not only to capacity building but to networking and advocacy. The DPU/CAN-CAM workshop brought together professional architecture practices and academia to develop the concepts of “human-centered design” and spatial agency within the reality on the ground of urban poor in Cambodia. Bringing together international and local students and technical professionals on policy analysis and design interventions, the workshop further contributed to the building of a network of academics and practitioners interested in the power of human-centered design and planning processes across South East Asia.



The workshop contributed to the building of a network of academics and practitioners interested in the power of human-centered design and planning

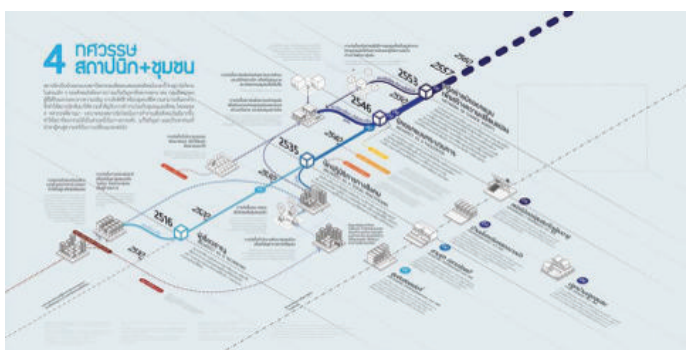
For further information, download the **students' reports** or contact **Nylen** from CDF at nylenchou@gmail.com or **Caroline** from DPU at caroline.el.newton@ucl.ac.uk

Thailand

Community architects unit established at the Association of Siamese Architects

The **Community Act Network**, a network of multidisciplinary community actors in Thailand founded in 2010, was officially integrated in the committee panel of **Association of Siamese Architects** (ASA) under Royal Patronage in 2014. In the ASA annual Expo'14 held early May this year in Bangkok, CAN hosted several activities in partnership with various actors, a participatory workshop involving students and architects to collaboratively design a community centre and playground for Klong Takok community in SamutPrakarn province, an exhibition presenting projects from different partners across Thailand, a documentary on the development of the community architect movement in Thailand over the past 4 decades, a series of talks and seminars including a 'Design Activism' panel discussion between ACHR's Somsook Boonyabancha and representatives of other social enterprises. To bring 'design-with-people for a social change' into the wider public CAN will continue to organise collaborative projects and events such as these over next few years amongst the architectural professionals and students in Thailand.

For further information, visit **Community Act Network** facebook page.



Indonesia

Bamboo Biennale 2014 edition takes place in Solo

Bamboo Biennale 2014 was a collaboration between a group of designers, including Rumah Rempah, architecture and interior design programs from Solo as well as the Municipality and the Ministry of Creative Economy. Our life long friend, architect and never ending inspiration Eko Prawoto was one of the curators for the Biennale, and invited 15 architects and designers to participate. Cakcak had the opportunity to stay in a local bamboo economic enterprise in the town of Klaten with three interior students from Institute Seni Indonesia (ISI) for one week. During the week long live-in they developed the "grasshopper", a bamboo frame for a tent structure, with emphasis on strength, durability, portability, and material efficiency. The works by the 15 architects and designers were exhibited at Fort Vastenburg city park throughout the month of September.

For further information, visit **Bamboo Biennale 2014 website** (only in Indonesian) or its **facebook page**.

Perween Rahman fellowship results announced

An important part of CAN's development this year has been the **Perween Rahman Fellowship**, launched to support young practitioners working on participatory development, as a way to honour the memory and continue the legacy of our Pakistani friend architect and activist, who was murdered in Karachi in 2013. After a thorough selection process from more than 30 applications, a small grant of \$2000 went to 15 action-based projects across 12

countries in Asia, that will last a minimum of six months. The projects vary from mapping to heritage conservation, from training to relocation planning and design workshops. They are all meant to not only deliver concrete improvements to the communities, but to build together new knowledge and partnerships in the process, using the limited grant to unlock further resources and funds, to make a bigger change possible. Good luck to all Perween Rahman fellows!



The projects are all meant to deliver concrete improvements to communities, building together new knowledge and partnerships in the process

The following are the projects which got funded for the Perween Rahman fellowship. Most of them are already underway. You can follow them by liking the **Perween Rahman Fellows** page on facebook.

1. Bac Kan city, Vietnam / Housing Improvement - Mr. Le Nhu Nga, a young community architect will work together with community builders on a low cost housing design in Bac Kan. The design will be part of settlement upgrading involving ACVN and members of CDF at the town level.

Applicant: Mr. Le Nhu Nga (ACVN), Ngacdf2810@gmail.com

2. Bangkok, Thailand / Comprehensive Community-Led Masterplan in Nagloeng - Architects from Openspace, together with community-based art collective E-Lerng, will work on a masterplan with the historical community of Nanglerng, that will be affected by the construction of a new metro station.

Applicant: E-Lerng + Openspace, nanglerng@yahoo.com

3. Valenzuela, Philippines / Onsite Reblocking - Ms. Villa Mae Libutague ("Val"), an architect working with TAMPEI will work in collaboration with the Homeless People's Federation, SHFC and FDUP will work with the ULHOA in community in Valenzuela to develop re-blocking plans and housing designs engaging with the local university.

Applicant: TAMPEI, Tampei_filippines@yahoo.com.ph, vhallibutague@gmail.com

4. Valenzuela, Philippines / Onsite Incremental housing on water - Ms. Emelyn Bermundo ("Emmy"), another TAMPEI architect, will work with university student, HPFP, and FDUP with the Del Rosario community to develop alternative plan using stilt-house design for the community, which sits on water.

Applicant: TAMPEI, [Tampei_filipines@yahoo.com.ph](mailto:Tampeifilipines@yahoo.com.ph), vhallibutague@gmail.com

5. Karachi, Pakistan / Training of community architect/youth to work with the poor - Mr. Siraj Uddin, a community-based technician from TTRC, will train community teenagers in Baldia Town (Karachi) to conduct mapping and surveying of infrastructure services across their settlements, in collaboration with OPP and URC, to produce a city wide infrastructure services map.

Applicant: Mr. Siraj (TTRC), sirajttrc@yahoo.com

6. Bahawalpur, Pakistan / Improvement of basic services (action research) - Mr. Muhammad Fiza, from HAMET, will work with a local government team in water and sanitation departments and community members to create a baseline study and cost-estimate needed to upgrade existing water supply and lane sewers in collaboration with OPP.

Applicant: Mr. Muhammad Fiza (The Hafeez Arain Motivational & Empowerment Trust - HAMET), fizaldr@gmail.com, hamet.sp@gmail.com

7. Ratnanagar, Nepal / Community re-planning for land security negotiation - Mr. Parvesh Khanal and Mr. Tulsi Kumar Kaway, Community Architects from PTAG, will work with the Salghari forest community to prepare housing and settlement upgrading plans and train local builders to negotiate for an alternative site plan in ACCA PMC.

Applicant: Mr. Pravesh Khanal and Mr. Tulsi Kumar Kaway (Pro-Poor Technical Assistance Group - PTAG), Khanal.pravesh@gmail.com, tulsikaway_07@yahoo.com

8. Ulanbataar, Mongolia / Creating open space and green area in Ger area - Mr. Batdorj, from the Young Architects Group, will work with informal communities in Ulaanbaatar's Sukhbaatar District to create open spaces and green areas, in collaboration with the NGO UDRC.

Applicant: Mr. Batdorj (Youth and architect group in Ulaanbaatar), Batdorj.gongor@gmail.com

9. Jakarta, Indonesia / City-wide mapping to network community along Ciliwung river - Ms. Ivana Lee, an architect from Ciliwung Merdeka, will work with four informal communities along the Ciliwung river edge. She will take advantage of cultural events to spontaneously involve people in participatory mapping.

Applicant: Ms. Ivana Lee (Ciliwung Merdeka), m.ivana.lee@gmail.com

10. Makassar, Indonesia / Mapping and gathering information of Kampung - Ms. Liza Marzaman, a young architect, will work with the Kampung Buloa fishing community in Makassar to map their settlement in response to new master plan by Tallo District, to develop long term upgrading plans in collaboration with the local university and ARKOM.

Applicant: Liza Marzaman (YP group in Makassar + ARKOM), Liza.marzaman@yahoo.com

11. Leh, India / Community based restoration of an old shrine and temple in Ladakh - Mr. Stanzin Tundup, from the Leh Old Town Initiative (LOTI), will support a community-based project to restore an old shrine and

temple in Leh, with Sumar and Chumathnag communities providing all the material and labor, in collaboration with Tibet Heritage Fund.

Applicant: Mr. Stanzin Tundup (THF/LOTI), stanzinachina@gmail.com

12. Mumbai, India / Participatory design with community school to improve school and community to be long life learning environments - Ms. Nicola Antaki will work with poor children in Muktangan (Lovegrove) school, will use the school as a laboratory to experiment with participatory design and planning prototypes, to improve the quality-of-life in their school, later their own community.

Applicant: Ms. Nicola Antaki, nicantaki@gmail.com

13. Phnom Penh, Cambodia / Assist in housing design of ACCA program in 3 provinces - Ms. Kao Danak, a young community architect of CAN-Cambodia, will assist communities in Kandal, Preah Sihanouk and Posenchey districts to map their settlements and develop low-cost housing design, cost estimation, and upgrading plans networking with university modules, to be partly funded by ACCA.

Applicant: Ms. Kao Danak (CDF), Kao.danak@gmail.com

14. Nasinu, Fiji / Assist community by conducting reblocking workshop - Mr. Hanisetoka Manueli, a community architect, will conduct reblocking design workshops with informal communities in the settlement of Caubati in the town of Nasinu, to train the communities in mapping their settlements and develop reblocking plans, in collaboration with the People's Community Network (PCN).

Applicant: Mr. Hanisetoka Manueli (PCN), hanisetoka.manueli@yahoo.com

15. Comilla, Bangladesh / Housing design community workshop - Ms. Fatema Sharmin Sonia, an architect, will conduct participatory mapping and housing design workshops with the people in Shondip Colony, in Chittagong, to map their settlements, develop housing improvement plans and construct some pilot house designs, in collaboration with UPPR.

Applicant: Ms. Fatema Sharmin Sonia, Sonia.archo5.ku@gmail.com

Perween Rahman was an architect, social activist and director of Orangi Pilot Project Research and Training Institute, who spent 30 years working with the residents of Karachi's informal settlements on mapping and self-help upgrading. On March 13th, 2013 Perween was shot dead by unidentified gunmen while returning home from work. With her work of documentation of informal settlements, she interfered with the interests of powerful land and water supply mafias in Karachi.

To call for justice for Perween, follow the investigation and pressure Karachi's authorities, Perween's sister Aquila Ismail set up a website and a facebook page, **Justice for Perween Rahman**.

You can contact Aquila at aquila.ismail@gmail.com

Media

Al Jazeera recently launched **Rebel Architecture**, a 6-part documentary about architects who are using design as a means of socio-political activism, including Spain's "guerrilla architect" Santiago Cirugeda, Karachi-based Yasmeen Lari's disaster-relief designs, Kunle Adeyemi's floating buildings in Nigeria, and Ricardo de Olivera perspective on Rio's favelas, Vo Trong Nghia sustainable buildings in Vietnam and Eyal Weizmann's spatial analysis of the Israeli occupation. Check it out at www.aljazeera.com/programmes/rebelarchitecture



New definitions of poverty lines have been developed by poor communities organizations across Asia with the support of **ACHR** and **IIED** following a groundbreaking study which challenges the "one-dollar-a-day" criteria adopted by international aid organizations such as the World Bank, arguing that poverty is a much more complex condition. This is probably the first research of its kind to be conducted by those who actually live and deal with poverty. The outcome is collected in a **report** available for download.

On-line newspaper **Inside Indonesia** published an article by Architecture student Muhammad Kamil, following Indonesia's growing community architecture movement, **Participatory design: the social role of architects and architecture in kampung upgrading**, with examples of successful initiatives from Jakarta, Yogyakarta and Surabaya.

A new paper by Rita Padawangi from the **Asian Research Institute** of Singapore, **Humanistic Planning and Urban Flood Disaster Governance in SE Asia**, examines the role of communities participation in urban flood mitigation projects, environmental improvement and riverfront redevelopment trajectories in Jakarta and Manila, cities that are frequently subject to severe flooding and where local governments are carrying out massive riveredge readjustment programmes.

Events

Thailand's **CODI** organized an open meeting and exhibition. Community representatives will be able to meet publicly local authorities, government representatives and landowners to discuss upgrading issues, focusing on 5 major issues: communities on state railway department land, communities on public land, canalside communities, funding and fund management, and citywide Community Development Funds.

Government centre, *Chaengwatthana, Laksi (Bangkok)* - 30.10, from 10am.
For more information write to **Ba Tan** at batan.ys@gmail.com.

The organization of the upcoming **Regional CAN workshop 2015, "Barangay-Wide Planning in Manila"**, is underway. It will be hosted by HPFPI, TAMPEI, CAN, the Philippine Alliance in Valenzuela and Mantilupa city, tentatively in the months of March or May 2015.

The workshop aims to discover alternative Barangay (sub-district) level planning solutions to upgrading community settlements and their livelihoods currently dealing with the following issues;

- living next to waterways and lakes
- public and private land ownership

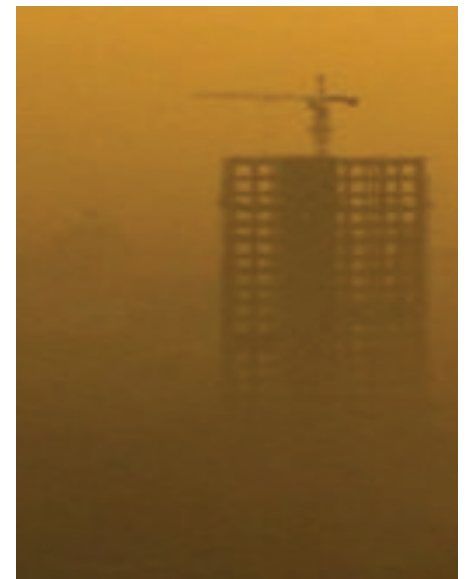
- living under transmission line (high voltage electric line)

- on-site low-cost upgrading design for communities living on already purchased land.

If you're interested contact Tee at for more information:

architect_once@hotmail.com

Jakarta Disorder, a documentary on **Urban Poor Consortium** and the struggle for recognition by kampungs at risk of eviction in the run-up to Indonesia's presidential elections - which resulted in pro-poor Joko Widodo historical victory - will be screened publicly in Indonesia for the first time at the end of October in Jakarta, Bandung and Yogya. To get dates and venues, visit its **fb page**.



Opportunities

Roskilde University (Denmark) and **Malmö University (Sweden)** opened a call for applications for 3 PhD scholarships in the field of housing questions in a Nordic or European context and focus on social, cultural, economic and/or political aspects. The program is characterized by interdisciplinarity, a participative approach and the aim to direct research towards change, innovation and societal sustainability. You can read the whole call **here**.

*“Life is a work in progress,
a process of uncovering our
natural openness, uncovering our
natural intelligence and warmth.
I have discovered, just as my
teachers always told me, that
we already have what we need.
The wisdom, the strength, the
confidence, the awakened heart
and mind are always accessible,
here, now, always.”*

- Pema Chodron